

# GEN<sup>TM</sup>

DIGITAL X-RAY SENSORS



**BRASSELER**  
USA<sup>®</sup>

# GEN™

## DIGITAL X-RAY SENSORS

You know when something is *just right.*



### GEN™ Digital X-Ray Sensors

CMOS Sensor Technology  
20+ Visible lp/mm Image Resolution  
19.5 x 19.5  $\mu\text{m}$  Pixel Size  
14 Bit Max Gray Levels

### GENfit

Sized comfortably between common size 1 and 2 sensors, GEN15 is designed for maximum versatility, reducing chairtime by eliminating the need to switch sensors during a full-mouth x-ray series. And the sensor's clipped corners provide a gentler, more comfortable fit.

38.83 mm

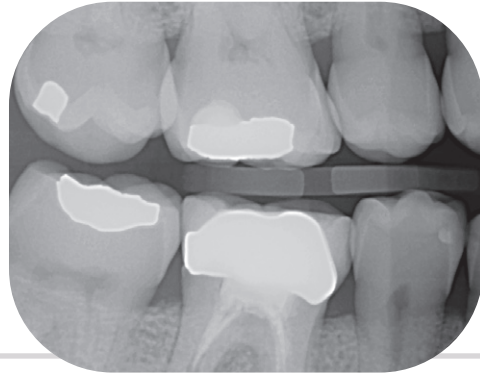


29.63 mm

Actual Size

## GEMclear

Crystal-clear radiograph images are essential for accurate diagnostics, and GEM's CMOS sensor delivers. Excellent resolution and low noise means caries will have no place to hide.



GEM radiograph courtesy of  
Bob Dokhanchi, DDS

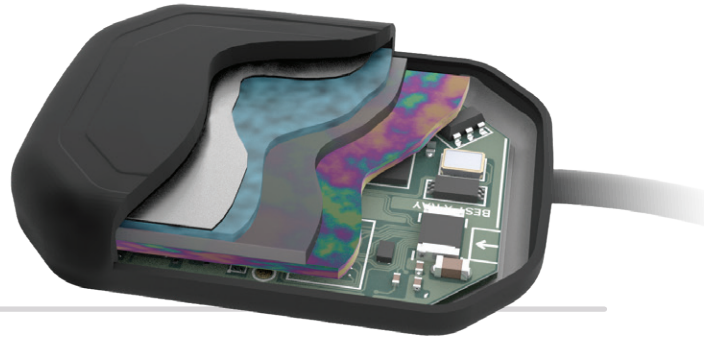


## GEMplay

GEM sensors plug and play seamlessly with leading dental imaging software for effortless, hands-off integration with most practice management platforms.

## GEMtech

With gold-plated connections, backscatter plates, adaptable software, and internal cushions, GEM sensors deliver the technology you demand in your modern practice.



### GEM15™ Starter Kit Order No. 5028384U0

- 1 GEM15 Digital X-Ray Sensor
- 100 GEM Sensor Barriers
- 1 Positioning System
- 1 Quick Start Guide





# DIGITAL X-RAY SENSORS

## What's in the Box

Each GEM Digital X-Ray Sensor comes with everything you need to start taking brilliant radiographs, including 100 sensor barriers, an easy-to-use positioning system, and a handy quick start guide.



Product		GEM10	GEM15	GEM20
<b>Starter Kit Order No.</b>		<b>5028383U0</b>	<b>5028384U0</b>	<b>5028385U0</b>
Sensor Technology		CMOS		
External Dimensions (mm)	L	36.36	38.83	41.80
	W	24.53	29.63	30.48
	H*	12.52	13.01	13.02
Active Imaging Area (mm)		30.01 x 20.01	32.99 x 25.82	35.92 x 25.82
Active Image Area (px)		1539 x 1026	1692 x 1324	1842 x 1324
Image Resolution		20+ visible lp/mm		
Image Pixel Size		19.5 x 19.5 µm		
Maximum Gray Levels		16,384 (14 bit)		
Cable Length		1.9m		

\*Measurement includes sensor plate and cord housing.



Sensors shown at actual size



Visit our website at [BrasselerUSA.com](http://BrasselerUSA.com)

To order call 800.841.4522 or fax 888.610.1937. In Canada call 800.363.3838

